


**Toba**


## 1 Bed & 1 Bath, 675 sqft

Consisting of 1 bedroom and 1 bath, the Toba has a large primary bedroom with a spacious walk in-closet complete with its own laundry facilities. The open-concept kitchen looks out over the living spaces that boast large glass slider doors. The entire unit comes in at 675 square feet and features a vaulted ceiling to make the rooms feel spacious and inviting.

### Features & Details

- Solar Ready
- Step Code 3 Energy Efficiency
- Mini-Split Heat Pump
- Modern Design
- Vaulted Ceilings
- Open Concept
- Under Cabinet Kitchen Lighting
- Laminate Countertops
- Large Glass Sliding Door
- Hardie Siding
- Standing Seam Metal Roof
- Lots of Windows for Natural Light
- Traditional Wood Framed Construction

### Upgrades

- Quartz Countertops
- Kitchen Tile Backsplash
- Appliance Package
- Gas Range Stove
- Tile Tub or Shower
- Tile Floor in Bathroom
- Heated Tile Floors in Bathroom
- Window Coverings
- Gas or Electric Fireplace
- Pine T&G Ceiling
- Metal Siding
- Gutters & Downspouts

**Contact us**  (778) 233-0446 Ext.106

**Toba**
**1 Bed & 1 Bath 675 sqft**
**Notes:**


---



---



---



---



---



---



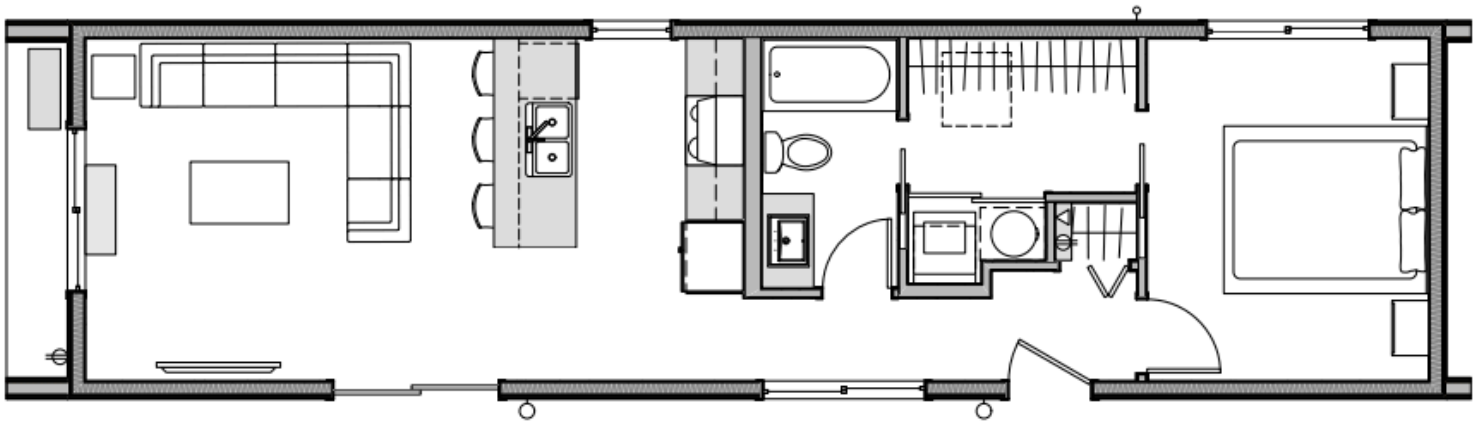
---

**Finish Options**

- Plumbing Fixtures
- Door Hardware
- Cabinets
- Countertops
- Tile Backsplash
- Tile in Bathroom
- Vinyl Plank Flooring
- Exterior Siding

**Toba Features**

- 13'6" W x 53'4" L
- Most Compact Unit
- Large Primary Bedroom
- Spacious Walk-in Closet with Laundry Facilities


**Get in touch.**

Send us an inquiry for options and specific details.

 [info@pacificmod.ca](mailto:info@pacificmod.ca)

