



Toba



1 Bed & 1 Bath, 677 ft²

Consisting of 1 bedroom and 1 bath, the Toba has a large primary bedroom with a spacious walk in-closet complete with its own laundry facilities. The open-concept kitchen looks out over the living spaces that boast two large glass slider doors. The entire unit comes in at 677 square feet and features a vaulted ceiling to make the rooms feel spacious and inviting.

Features & Details

- Solar Ready
- Step Code 3 Efficiency
- Mini-Split Heat Pump
- Laundry & Storage
- Modern Design
- Vaulted Ceilings
- Open Concept
- Large Glass Sliding Doors
- Quartz Kitchen Countertops
- Lots of Windows, for Natural Light
- Traditional Wood Framed Construction

Options

- Plumbing Fixtures
- Door Hardware
- Cabinets
- Kitchen Island
- Vinyl Plank Flooring
- Exterior Siding

Upgrades

- Gas Range Stove
- Kitchen Tile Backsplash
- Quartz Bathroom Countertops
- Tile Tub or Shower
- Tile Floor in Bathroom
- Window Coverings
- Deck and Pergola
- Pine T / G Ceiling
- Gutters & Downspouts

Contact us

 (778) 233-0446 Ext.106

Toba
Toba Features

1 Bed & 1 Bath,
677 ft²

- 14' Wx52' L
- Most Compact Unit
- Large Primary Bedroom
- Spacious Walk-in Closet with Laundry Facilities

Appliances- Samsung


- 24" Dishwasher
- 30" Over-The-Range Microwave
- 30" Smooth Top Range
- 30" French Door Fridge
- 27" Front Load Washer
- 27" Front Load Dryer

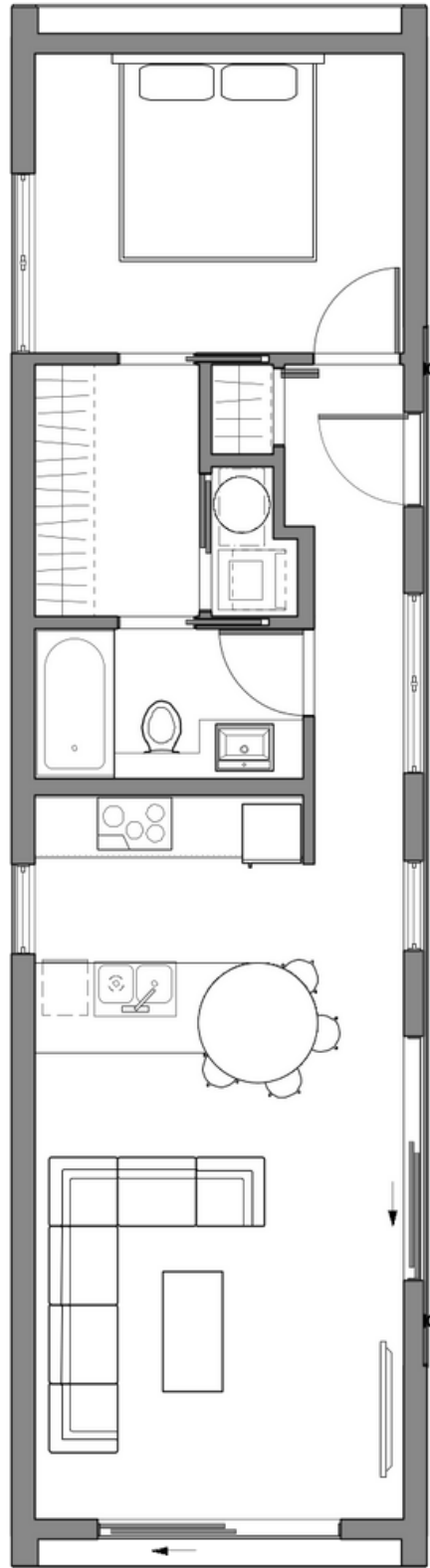
Upgrade

- 30" Gas Range

Get in touch.

Send us an inquiry for options and specific details.

 info@pacificmod.ca


Notes:

