


**Esperanza**


## 4 Bed & 2.5 Bath, 1980 sqft

The Esperanza is our most spacious pre-designed modular home and is perfect for larger families or those looking for extra room to incorporate a home office. From proper finishing techniques to high-end products, this affordable modular solution makes it easy to customize and maintain in the long-term.

### Features & Details

- Solar Ready
- Step Code 3 Energy Efficiency
- Mini-Split Heat Pump
- Modern Design
- Vaulted Ceilings
- Open Concept
- Laminate Countertops
- Laundry Room & Storage
- Large Glass Sliding Doors
- Hardie Siding
- Standing Seam Metal Roof
- Lots of Windows for Natural Light
- Traditional Wood Framed Construction

### Upgrades

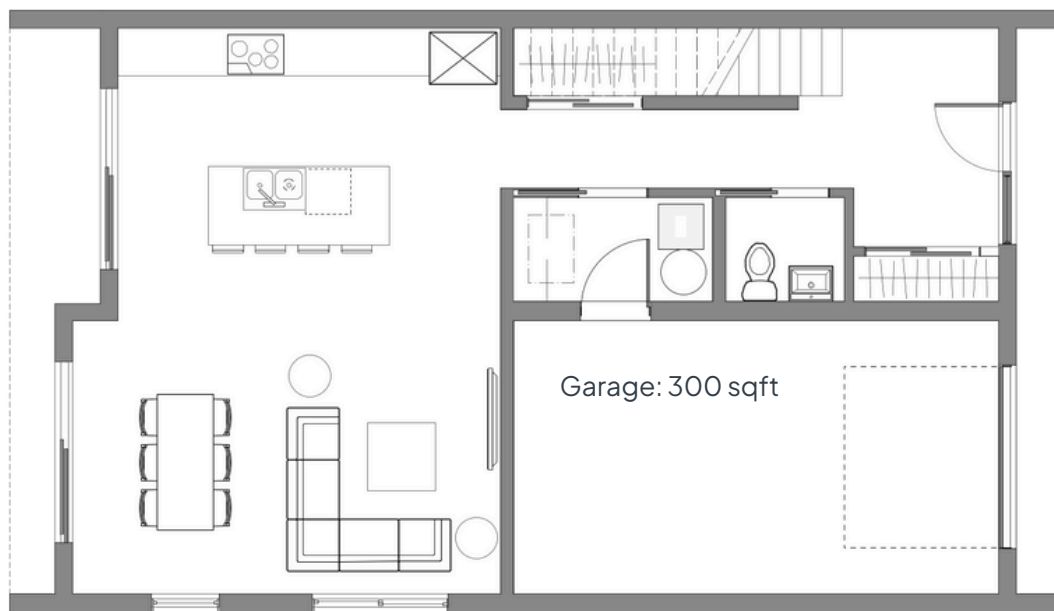
- Quartz Countertops
- Kitchen Tile Backsplash
- Under Cabinet Lighting
- Appliance Package
- Gas Range Stove
- Tile Tub or Shower
- Tile Floor in Bathrooms
- Heated Tile Floors in Bathrooms
- Window Coverings
- Gas or Electric Fireplace
- Pine T&G Ceiling
- Metal Siding
- Gutters & Downspouts

**Contact us**  (778) 233-0446 Ext.106

## Esperanza Features:

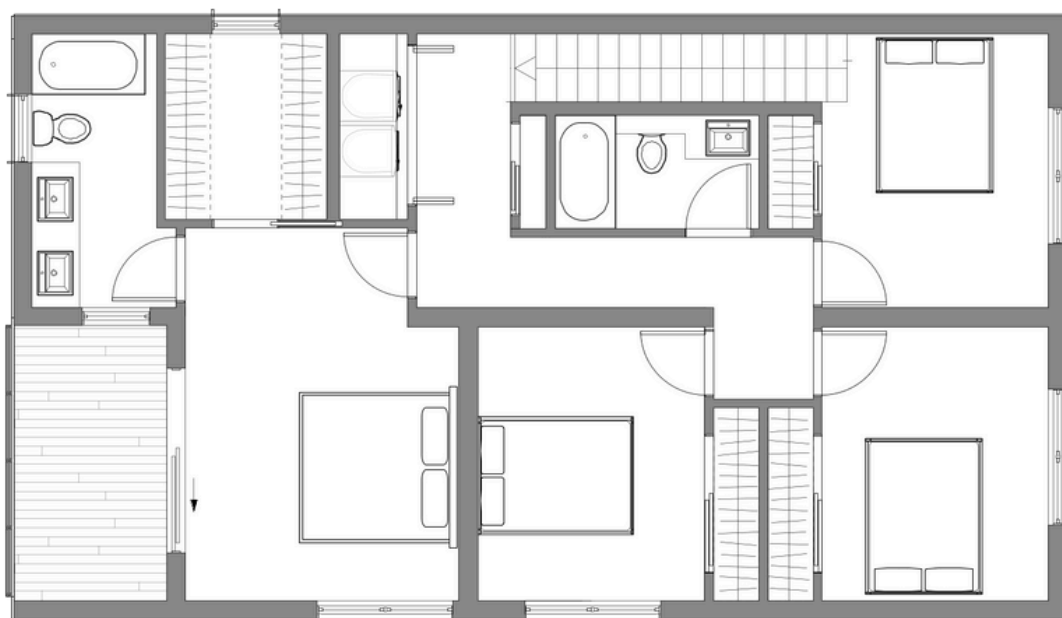
## Main Floor

- 26' 7" W x 46' 4" L
- Main Level Entry
- Open Concept
- Kitchen Island
- 290 Sqft Garage
- Primary Features:
  - Private Balcony
  - Ensuite
  - Walk-in Closet



## Second Upper Floor

- Plumbing Fixtures
- Door Hardware
- Cabinets
- Countertops
- Tile Backsplash
- Tile in Bathrooms
- Vinyl Plank Flooring
- Exterior Siding



**Get in touch.**

Send us an inquiry for options and specific details.



info@pacificmod.ca