



Esperanza



## 4 Bed & 2.5 Bath, 1890 ft<sup>2</sup>

The Esperanza is our most spacious pre-designed modular home and is perfect for larger families or those looking for extra room to incorporate a home office. From proper finishing techniques to high-end products, this affordable modular solution makes it easy to customize and maintain in the long-term.

### Features & Details

- Solar Ready
- Step Code 3 Efficiency
- Mini-Split Heat Pump
- Laundry & Storage
- Modern Design
- Open Concept
- Large Glass Sliding Doors
- Quartz Kitchen Countertops
- Lots of Windows, for Natural Light
- Traditional Wood Framed Construction

### Options

- Plumbing Fixtures
- Door Hardware
- Cabinets
- Kitchen Island
- Vinyl Plank Flooring
- Exterior Siding

### Upgrades

- Gas Range Stove
- Kitchen Tile Backsplash
- Quartz Bathroom Countertops
- Tile Tub or Shower
- Tile Floor in Bathroom
- Window Coverings
- Deck and Pergola
- Pine T / G Ceiling
- Gutters & Downspouts

### Contact us

 (778) 233-0446 Ext.106

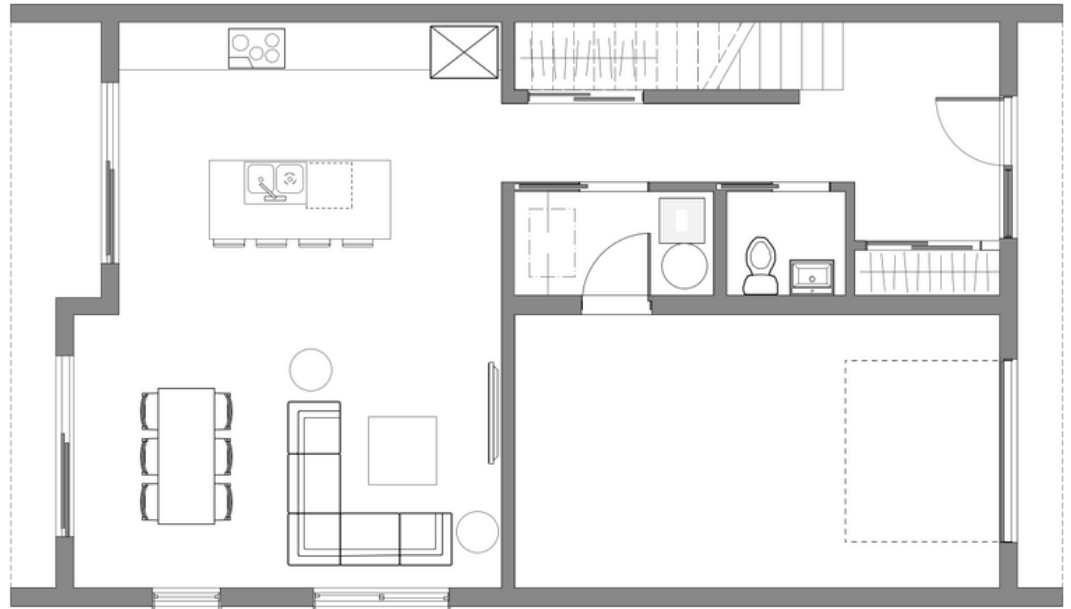
Esperanza

**Esperanza Features**

4 Bed & 2.5 Bath,  
1890 ft<sup>2</sup>

- 46' 4" W x 26' 7" L
- Main Level Entry
- Open Concept
- Kitchen Island
- 290 Sqft Garage
- Primary Features:
  - Private Balcony
  - Ensuite
  - Walk-in Closet

Main Floor



**Appliances-Samsung**

- 24" Dishwasher
- 30" Over -The-Range Microwave
- 30" Smooth Top Range
- 30" French Door Fridge
- 27" Front Load Washer
- 27" Front Load Dryer

**Upgrade**

- 30" Gas Range

**Get in touch.**

Send us an inquiry for options and specific details.

 [info@pacificmod.ca](mailto:info@pacificmod.ca)

Second Upper Floor

