



Bute



2 Bed & 2 Bath, 1137 ft²

The Bute is our 2-bedroom, 2-bathroom 1137 square foot double-wide unit. Private primary, complete with a walk-in closet and ensuite, with glass sliding doors to your own private patio oasis. From proper finishing techniques to high-end products, this affordable modular solution makes it easy to customize and maintain in the long-term.

Features & Details

- Solar Ready
- Step Code 3 Efficiency
- Mini-Split Heat Pump
- Laundry & Storage
- Modern Design
- Vaulted Ceilings
- Open Concept
- Large Glass Sliding Doors
- Quartz Kitchen Countertops
- Lots of Windows, for Natural Light
- Traditional Wood Framed Construction

Options

- Plumbing Fixtures
- Door Hardware
- Cabinets
- Kitchen Island
- Vinyl Plank Flooring
- Exterior Siding

Upgrades

- Gas Range Stove
- Kitchen Tile Backsplash
- Quartz Bathroom Countertops
- Tile Tub or Shower
- Tile Floor in Bathroom
- Window Coverings
- Deck and Pergola
- Pine T / G Ceiling
- Gutters & Downspouts

Contact us

 (778) 233-0446 Ext.106

Bute

Bute Features

2 Bed & 2 Bath,
1137 ft²

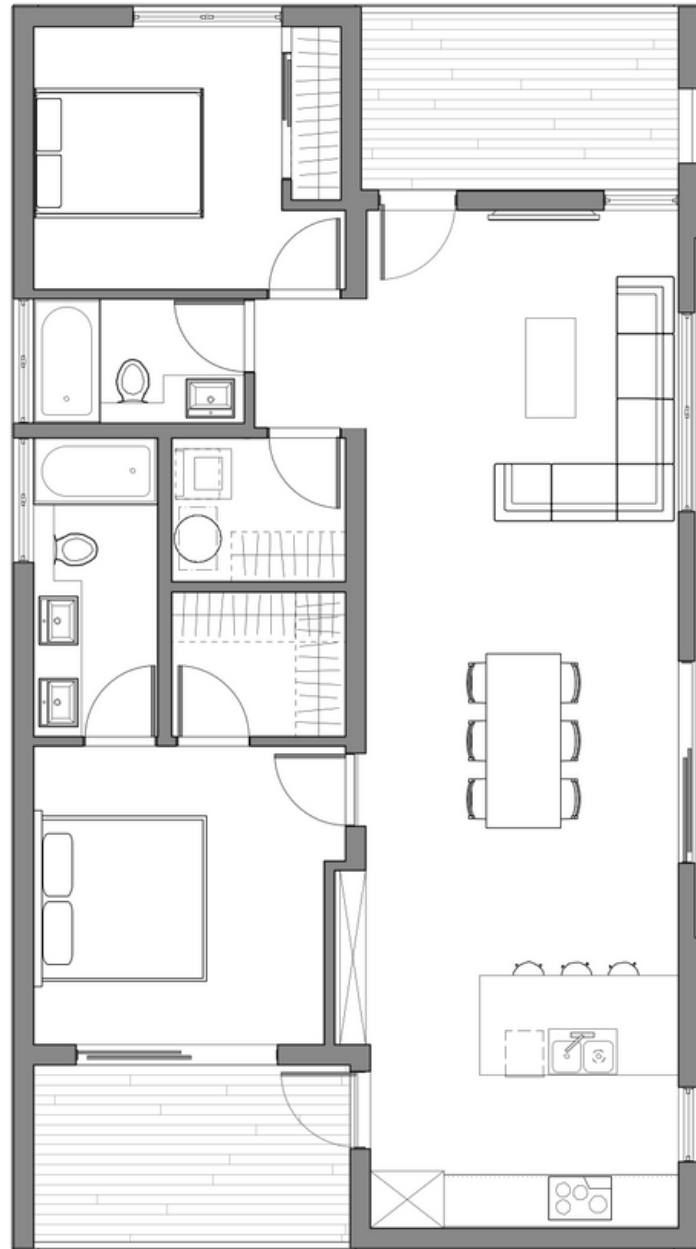
- 27' W x 49' 4 1/2" L
- Private Primary Bedroom
- Primary Walk-in Closet and Ensuite
- Primary Bedroom has Patio
- Laundry Room

Appliances- Samsung

- 24" Dishwasher
- 30" Over-The-Range Microwave
- 30" Smooth Top Range
- 30" French Door Fridge
- 27" Front Load Washer
- 27" Front Load Dryer

Upgrade

- 30" Gas Range



Get in touch.

Send us an inquiry for options and specific details.

 info@pacificmod.ca

Notes:
